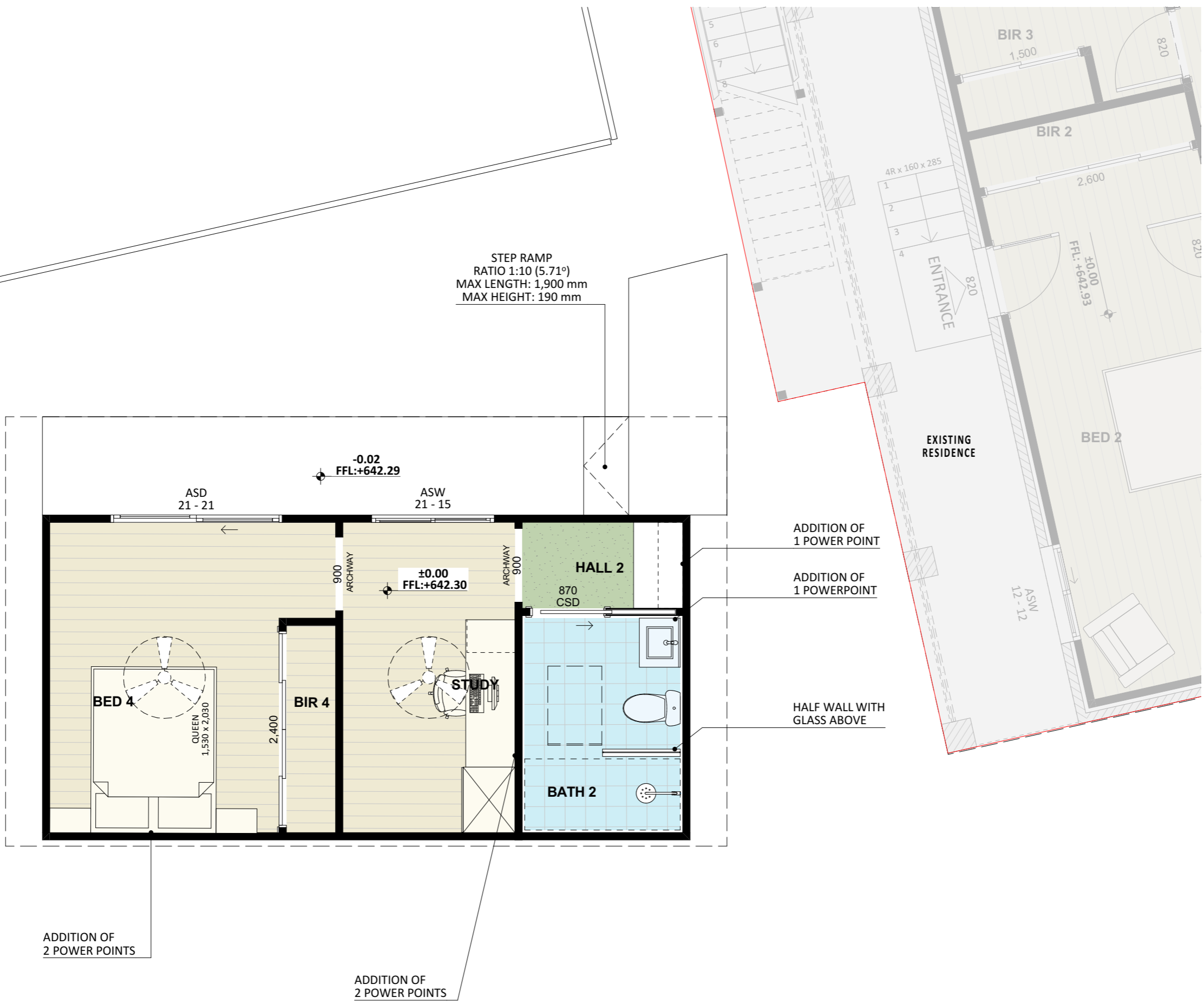


STEP RAMP
RATIO 1:10 (5.71°)
MAX LENGTH: 1,900 mm
MAX HEIGHT: 190 mm



ADDITION OF
2 POWER POINTS

ADDITION OF
2 POWER POINTS

ADDITION OF
1 POWER POINT

ADDITION OF
1 POWERPOINT

HALF WALL WITH
GLASS ABOVE